

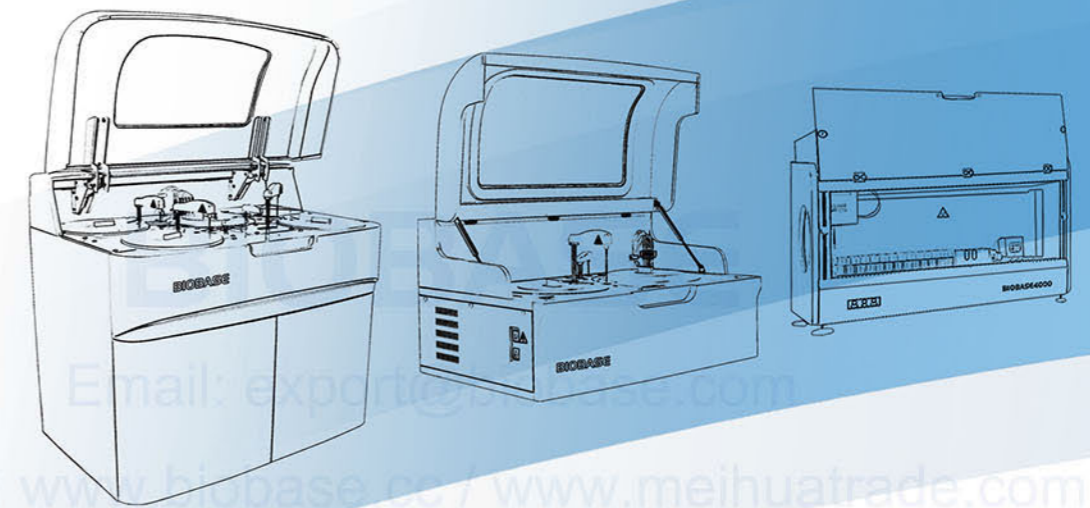
BIOBASE®

Clinical & Analytical

BIOBASE

Email: export@biobase.com

Website: www.biobase.cc / www.meihuatrade.com



Email: export@biobase.com

Website: www.biobase.cc / www.meihuatrade.com

BIOBASE GROUP

Add: No.51 South Gongye Road, Jinan, China
Tel: +86-531-81219801/03 Fax: +86-531-81219804
E-mail: export@biobase.com
Web: www.biobase.cc www.biobase.com



 BIOBASE CHINA
 BIOBASE CHINA
 BIOBASE CHINA

Introduction

BIOBASE Group is a professional manufacturer of laboratory and medical products since 1999. Our main products in Medical are Auto chemistry analyzer, IVD Reagents, Auto ELISA processor, ELISA Microplate reader & washer, Hematology analyzer, Electrolyte analyzer, Urine analyzer, etc. In Laboratory mainly are Biological safety cabinet, Fume hood, Laminar flow cabinet, etc.

We have more than 2,000 employees and 100, 000 square meters production base. The wide experience on the research and manufacturing Lab and Medical products has managed BIOBASE to be able to offer a large range of competitive products with the highest quality.

Our advantages:

Excellent R&D team of more than 80 researchers.

Experienced after-sales service engineers more than 100 persons.

20 years production experience and national standard factory workshop.

Strong QC team to inspect all production stage, from the accessories to the finished products.

ISO9001, ISO13485, ISO14001, SGS, CE, RIQAS, FDA certificate.

Contents

01 Auto Chemistry Analyzer	35 Auto Hematology Analyzer
15 Clinical Chemistry Reagents	41 Thermal Cycler PCR
17 Auto ELISA Processor	45 Urine Analyzer
25 ELISA Microplate Reader	49 Electrolyte Analyzer
26 ELISA Microplate Washer	51 Blood Gas & Electrolyte Analyzer
28 Microplate Incubator	53 Water Purifier
29 Elisa Reagent Kits	
31 ESR Analyzer	
32 Auto Coagulation Analyzer	



ISO9001



ISO13485



ISO14001



SGS



CE



RIQAS



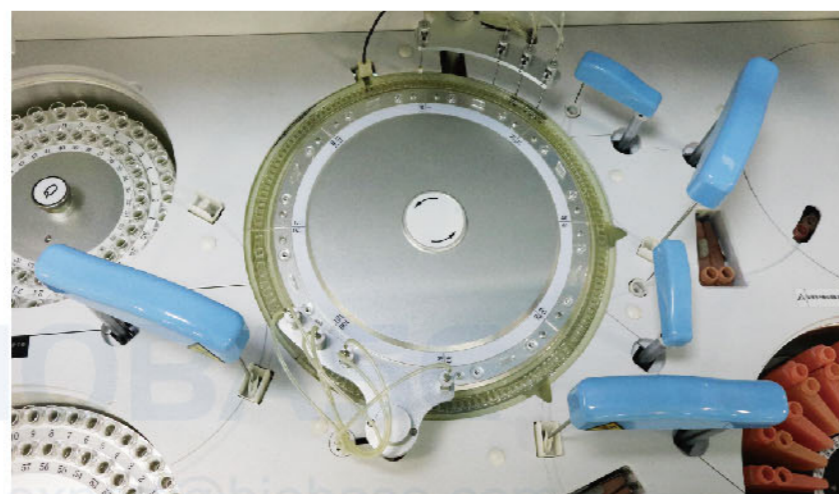
FDA

Auto Chemistry Analyzer

01

Reaction Module

Long lifetime halogen lamp, stable light source.
340, 405, 450, 510, 546, 578, 630, 700nm eight wavelength filters.
37°C stable incubation system.



Email: export@biobase.com

Website: www.biobase.cc / www.meihuatrade.com



02

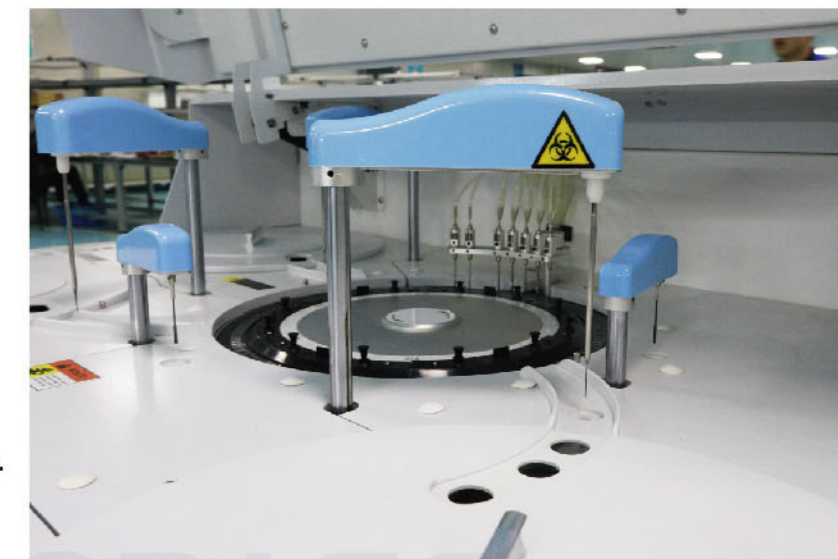
Functional Software

Sample information batch and combination input quickly and easily.
24 hours working, with STAT function.
Special designed software surface for engineer to monitor whole instrument status clearly.
LIS system available.

03

Accurate Sample & Reagent Adding System

Accurate sampling pump, sample adding 0.1µl stepping, reagent adding 1µl stepping.
Sample & reagent probes with liquid level sensor and anti-collision functions.



BIOPBASE

Email: export@biobase.com

Website: www.biobase.cc / www.meihuatrade.com



04

Sample and Reagent Tray

Reagent tray with 24 hours cooling system
Reagent volume real-time detection, with remaining volume display online.

200T/H Auto Chemistry Analyzer BK-200



Overall appearance:

One probe for reagents and samples;
One mixer; Washing probe.

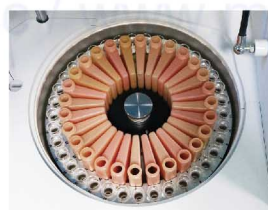


Features:

- ①. 37 Sample positions.
- ②. 28 Reagent positions.
- ③. 48 Reaction cuvettes.
- ④. 200 Tests per hour.
- ⑤. Probe with anti-collision function, liquid level detection function.



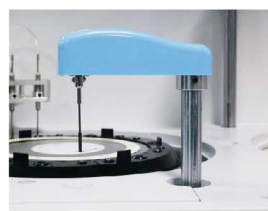
Reaction Tray
37±0.1°C,
real-time monitor.



Reagent Tray
Refrigerated tray with
independent switch.



Sample Needle
Liquid level sensor function.
Anti-collision function. Reagent
volume real-time detection.



Mixer Probe
Teflon coating to avoid
cross contamination.



Washing Probe
Independent 2-step
washing system.



**LAN Port
Access**

Parameters:

Model	BK-200	
Overall Performance	Throughput	200 Tests/hour
	Analysis Method	End-point, Fixed-time, Rate(Kinetic)
	Certificates	CE, FDA, ISO9001, ISO14001, ISO13485
Sample & Reagent System	Sample Positions	37 sample positions
	Reagent Positions	28 reagent positions
	Sample Volume	2~70µl
	Reagent Volume	20~350µl
	Probe	Teflon coating, with anti-collision function, liquid level detection function
	Probe Washing	Automatic washing interior and exterior
	Reagent Cooling	Refrigerated tray with independent switch
Reaction System	Temperature Control	37±0.1°C, real-time monitoring
	Cuvettes	48 reusable cuvettes, optical length 6mm
	Mixer Probe	Independent stirring
	Washing	Automatic cuvettes washing
	STAT Function	YES
Optical System	Light Source	6V/10W halogen lamp
	Spectrophotometry	Post-spectral spectrophotometry
	Wavelength	340, 405, 450, 510, 546, 578, 630, 700nm
	Absorbance	0~3.0Abs
Calibration & QC	Calibration	Linear: K factor, 1-point, 2-point and multipoint linear Non-Linear: Spline, Polygon, Index, Ogarithm, Logit-4P, Logit-5P
	Quality Control	Real-time QC, Westgard multi rule, Cumulative sum check, Twin Plot(2D)
Data Management	Software	Windows 7/8/10, 32 or 64 bit
	LIS System	Bi-direction, support HL7 protocol
	Interface	LAN port access
Working Conditions	Printer	External, multiple reporting mode available
	Power Supply	AC220V±10%, 50/60Hz, 110V±10%, 60Hz, 300W
	Temperature	10~30°C
	Water Consumption	Deionized water: <5L/H
Size & Weight	Humidity	30~80%
	External Size (W*D*H)	625*425*460mm
	Net Weight	36kg
	Package Size (W*D*H)	721*531*855mm
	Gross Weight	55kg

200T/H Auto Chemistry Analyzer BK-280



Features:

- ①. 49 Sample positions.
- ②. 56 Reagent positions.
- ③. 120 Reaction cuvettes.
- ④. 200 tests per hour.
- ⑤. Probe with anti-collision function, liquid level detection function.



Reaction Tray
37±0.1°C,
real-time monitor.



Mixer Probe
Teflon coating to avoid
cross contamination.



Reagent Tray
2~8°C cooling
for 24 hours.



Sample Needle
Liquid level sensor function.
Anti-collision function. Reagent
volume real-time detection.



Software
User-friendly
software.



Washing Probe
Independent 4-step
washing system.

Parameters:

Model	BK-280	
Overall Performance	Throughput	200 Tests/hour
	Analysis Method	End-point, Fixed-time, Rate(Kinetic), Turbidimetry
	Certificates	CE, FDA, ISO9001, ISO14001, ISO13485
Sample & Reagent System	Sample Positions	49 sample positions
	Reagent Positions	56 reagent positions
	Sample Volume	2~70µl
	Reagent Volume	20~350µl
	Probe	Teflon coating, with anti-collision function, liquid level detection function
	Probe Washing	Automatic washing interior and exterior
	Reagent Cooling	Refrigerated tray with independent switch
Reaction System	Temperature Control	37±0.1°C, real-time monitoring
	Cuvettes	120 reusable cuvettes, optical length 6mm
	Mixer Probe	Independent stirring
	Washing	Automatic cuvettes washing
	STAT function	YES
	Optical System	Light Source
Spectrophotometry		Post-spectral spectrophotometry
Wavelength		340, 405, 450, 480, 505, 546, 570, 600, 630, 700, 750, 800nm
Absorbance		0~3.0Abs
Calibration & QC	Calibration	Linear: K factor, 1-point, 2-point and multipoint linear Non-Linear: Spline, Polygon, Index, Ogarithm, Logit-4P, Logit-5P
	Quality Control	Real-time QC, Westgard multi rule, Cumulative sum check, Twin Plot(2D)
Data Management	Software	Windows 7/8/10, 32 or 64 bit
	LIS System	Bi-direction, support HL7 protocol
	Printer	External, multiple reporting mode available
Working Conditions	Power Supply	AC220V±10% 50/60Hz, 110V±10% 60Hz, 300W
	Temperature	10~30°C
	Water Consumption	Deionized water: 5L/H
Size & Weight	Humidity	30~80%
	External Size (W*D*H)	950*612*510mm
	Net Weight	75kg
	Package Size (W*D*H)	1118*728*1151mm
	Gross Weight	130kg

400T/H Auto Chemistry Analyzer BK-400



Features:

- ①. 400 Tests per hour.
- ②. 90 Reagent positions.
- ③. 120 Reaction cuvettes.
- ④. Built-in sample barcode system optional.
- ⑤. 60 Sample positions (90 sample positions optional).
- ⑥. Probe with anti-collision function, liquid level detection function.



Reaction Tray
37±0.1°C, real-time monitor.



Mixer Probe
Teflon coating to avoid cross contamination.



Reagent Tray
2~8°C cooling for 24 hours.



Sample Probe
Liquid level sensor function.
Anti-collision function.
Reagent volume real-time detection.



Software
User-friendly software.



Washing Probe
Independent 7-step washing system.

Parameters:

Model	BK-400	
Overall Performance	Throughput	400 Tests/hour
	Analysis Method	End-point, Fixed-time, Rate(Kinetic), Turbidimetry
	Certificates	CE, FDA, ISO9001, ISO14001, ISO13485
Sample & Reagent System	Sample Positions	60 or 90 sample positions, built-in barcode system available
	Reagent Positions	90 refrigerated reagent positions
	Sample Volume	2~70µl
	Reagent Volume	20~350µl
	Probe	Teflon coating, with anti-collision function, liquid level detection function
	Probe Washing	Automatic washing interior and exterior
	Reagent Cooling	Refrigerated tray with independent switch
Reaction System	Temperature Control	37±0.1°C, real-time monitoring
	Cuvettes	120 reusable cuvettes, optical length 6mm
	Mixer Probe	Independent stirring
	Washing	Automatic cuvettes washing
	STAT Function	YES
	Optical System	Light Source
Spectrophotometry		Post-spectral spectrophotometry
Wavelength		340, 405, 450, 480, 505, 546, 570, 600, 630, 700, 750, 800nm
Absorbance		0~3.0Abs
Calibration & QC	Calibration	Linear: K factor, 1-point, 2-point and multipoint linear Non-Linear: Spline, Polygon, Index, Ogarithm, Logit-4P, Logit-5P
	Quality Control	Real-time QC, Westgard multi rule, Cumulative Sum Check, Twin Plot(2D)
Data Management	Software	Windows 7/8/10, 32 or 64 bit
	LIS System	Bi-direction, support HL7 protocol
	Interface	LAN port access
	Printer	External, multiple reporting mode available
Working Conditions	Power Supply	AC220V±10% 50/60Hz, 110V±10% 60Hz, 500VA
	Temperature	10~30°C
	Water Consumption	Deionized water: 12L/H
	Humidity	30~80%
Size & Weight	External Size (W*D*H)	1167*780*1016mm
	Net Weight	193kg
	Package Size (W*D*H)	1348*928*1399mm
	Gross Weight	267kg

600T/H Auto Chemistry Analyzer BK-600



Features:

- ①. 600 Tests per hour.
- ②. 120 Reaction cuvettes.
- ③. 180 Refrigerated reagent positions.
- ⑤. Built-in sample barcode system optional.
- ⑥. 90 Sample positions.(120 sample positions optional).
- ⑦. Probe with anti-collision function, liquid level detection function.



Reaction Tray
37±0.1°C,
real-time monitor.



Mixer Probe
Teflon coating to avoid
cross contamination.



Reagent Tray
2~8°C cooling
for 24 hours.



Sample Probe
Liquid level sensor function.
Anti-collision function.
Reagent volume real-time
detection.



Software
User-friendly
software.



Washing Probe
Independent 7-step
washing system.

Parameters:

Model	BK-600	
Overall Performance	Throughput	600 Tests/hour
	Analysis Method	End-point, Fixed-time, Rate, Two-point, Turbidimetry
	Certificates	CE, FDA, ISO9001, ISO14001, ISO13485
Sample & Reagent System	Sample Positions	90 sample positions, built-in barcode system available
	Reagent Positions	180 refrigerated reagent positions (R1: 45 & R2: 45)
	Sample Volume	2~70µl
	Reagent Volume	20~350µl
	Probe	Teflon coating, with anti-collision function, liquid level detection function
	Probe Washing	Automatic washing interior and exterior
	Reagent Cooling	Refrigerated tray with independent switch
Reaction System	Temperature Control	37±0.1°C, real-time monitoring
	Cuvettes	120 reusable cuvettes, optical length 6mm
	Mixer Probe	Independent stirring
	Washing	Automatic cuvettes washing
	STAT Function	YES
Optical System	Light Source	12V/30W halogen lamp
	Spectrophotometry	Post-spectral spectrophotometry
	Wavelength	340, 405, 450, 480, 505, 546, 570, 600, 630, 700, 750, 800nm
	Absorbance	0~3.0Abs
Calibration & QC	Calibration	1-point, 2-point and multi-point, factor, Spline, Logit-4P, Logit-5P
	Quality Control	Inserting quality control at random
Data Management	Software	Windows 7/8/10
	LIS System	Available
	Interface	LAN port access
	Printer	External, multiple reporting mode available
Working Conditions	Power Supply	AC220V±10% 50/60Hz, 110V±10% 60Hz, 750W
	Temperature	10~30°C
	Water Consumption	Deionized water: 15L/H
Size & Weight	Humidity	30~80%
	External Size (W*D*H)	1167*780*1016mm
	Net Weight	216kg
	Package Size (W*D*H)	1348*928*1399mm
	Gross Weight	290kg
Accessory Package Size	678*624*548mm	
Accessory Gross Weight	70kg	

800T/H Auto Chemistry Analyzer BK-1200



Features:

- ①. 150 Sample positions.
- ②. 160 Reaction cuvettes.
- ③. 180 Refrigerated reagent positions.
- ④. Optical filter/fiber bragg grating selectable.
- ⑤. 800 Tests per hour (1200 Tests with ISE module).
- ⑥. Built-in sample barcode system optional.
- ⑦. Probe with anti-collision function, liquid level detection function.



Reaction Tray
37±0.1°C, water bath



Mixer Probe
Dual mixer, auto frequency adjustment



Reagent Tray
2~8°C cooling for 24 hours



Sample Probe
Liquid level sensor function Anti collision function Reagent volume real-time detection



Software
User-friendly software



Washing Probe
Dual design, high efficiency

Parameters:

Model	BK-1200	
Overall Performance	Throughput	800 Tests/hour, 1200Tests/hour with ISE(Optional)
	Analysis Method	End-point, Fixed-time, Rate(Kinetic), Turbidimetry
	Certificates	CE, FDA, ISO9001, ISO14001, ISO13485
Sample & Reagent System	Sample Positions	150 sample positions
	Reagent Positions	180 reagent positions
	Sample Volume	2~70µl
	Reagent Volume	20~350µl
	Probe	Teflon coating, with anti-collision function, liquid level detection function
	Probe Washing	Automatic washing interior and exterior
	Reagent Cooling	Refrigerated tray with independent switch
Reaction System	Temperature Control	Water bath, 37±0.1°C, real-time monitoring
	Cuvettes	160 reusable cuvettes, optical length 6mm
	Mixer Probe	Independent stirring
	Washing	Automatic cuvettes washing
	STAT Function	YES
	Optical System	Light Source
Spectrophotometry		Post-spectral spectrophotometry
Wavelength		12 wavelengths from 340~800nm
Absorbance		-0.3~3.3Abs
Calibration & QC	Calibration	Linear: K factor, 1-point, 2-point and multipoint linear Non-Linear: Spline, Polygon, Index, Ogarithm, Logit-4P, Logit-5P
	Quality Control	Real-time QC, Westgard multi rule, Cumulative Sum Check, Twin Plot(2D)
Data Management	Software	Windows 7/8/10, 32 or 64 bit
	LIS System	Bi-direction, support HL7 protocol
	Interface	LAN port access
	Printer	External, multiple reporting mode available
Working Conditions	Power Supply	AC220V±10% 50/60Hz, 110V±10% 60Hz, 1500W
	Temperature	10~30°C
	Water Consumption	Deionized water: 20L/H
	Humidity	30~80%
Size & Weight	External Size (W*D*H)	1360*791*1157mm
	Net Weight	286kg
	Package Size (W*D*H)	1718*929*1434mm
	Gross Weight	390kg

Semi-auto Chemistry Analyzer BIOBASE-Silver Plus



Email: export@biobase.com

Features:

- ①. Easy operation by one button, can be connected to the computer.
- ②. End point, two point (fixed time), kinetic, multistandard, bichromatic, etc.
- ③. With 20 incubating positions.
- ④. Large memory to store 200 test programs and 1000 testing results.
- ⑤. Excellent QC function, QC chart can be stored, displayed and printed.
- ⑥. 3 level temperature: 25°C, 30°C, 37°C can be selected in flow cell and incubating.
- ⑦. Real time graph can be displayed and printed.

Parameters:

Model	BIOBASE-Silver Plus
Reading Cuvette	Both through cell and direct reading cuvette
Incubating Positions	20 incubation positions
Photometric System	Light source: 6V, 10W halogen lamp
	Filters: 340, 405, 492, 510, 546, 578, 620nm, 2 more open filter positions, ±2nm pass-hand
	Wavelength accuracy: ±2nm
Measuring System	Measuring range: 0~2.500 OD
	Photometric linearity: ±2% from 0 to 2.000 OD
	Photometric accuracy: ±2% from 0 to 2.001 OD
	Drift<0.005 OD
	Carry over≤1%
Incubator Temperature	RT+25°C, 30°C, 37°C
Control	Precision: ±0.1°C
Display	Touch screen
Printer	Built-in thermal printer
Interface	RS-232, USB
Power Supply	AC110/220V±10%, 60/50Hz
External Size(W*D*H)	340*380*180mm
Package Size(W*D*H)	575*490*350mm
Gross Weight	19kg

Clinical Chemistry Reagents

118 Item Reagent Kits:



Class 100 Clean Workshop



Chemistry Reagent



Used in BIOBASE or other brands Chemistry analyzer

- ①. Pancreas: α -AMY, LPS.
- ②. Pepsinogen: PG I, PG II.
- ③. Rheumatism: RF.
- ④. Hemagglutination: Fb, Fn.
- ⑤. Glycometabolism: GLU, GSP, HbA1c, D3H, LAC.
- ⑥. Blood Gas Electrolyte: Cl, Ca, P, Mg, CO₂, Na, K, Cu, Fe, Zn, etc.
- ⑦. Blood Lipid: CHO, TG, HDL-C, LDL-C, APOA1, APOB, HCY, PLIP, Lp(a), APOE, ApoA2, ApoC2.
- ⑧. Myocardium Zymogram: LDH, CK-NAC, CK-MB, MB, ACE, LDH I, Tnl, MA.
- ⑨. Kidney Function: UREA, CREA, UA, MALB, CYS-C, BMG, NAG, UTP, α 1-MG, RBP.
- ⑩. Special Protein: ASO, CRP, PALB, TRF, G6PD, DD, C3, C4, IgA, IgM, IgG, HS-CRP, UIBC, Fet, IgE.
- ⑪. Liver Function: ALP, γ -GT, ALT, AST, TP, ALB, TBIL, DBIL, CHE, TBA, AFU, 5'-NT, AMO, AFP, AMM, LAP, ALC, GLDH, AAT.

Small package	24ml~40ml
Medium package	96ml~160ml
Big package	480ml~560ml

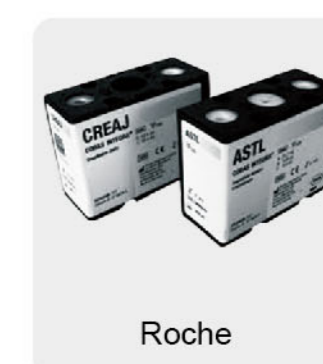
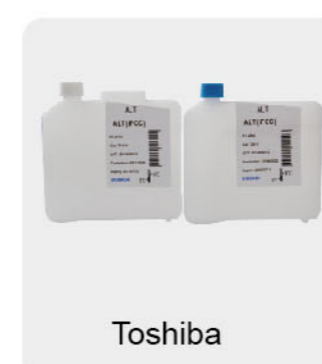
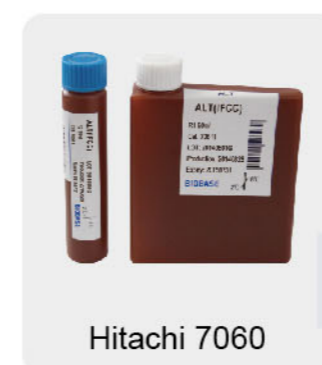
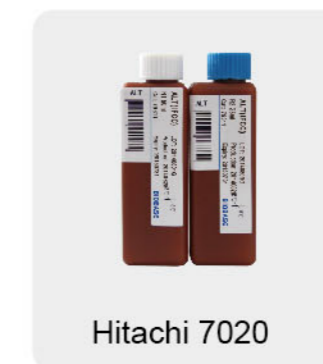
Applicable to different brand biochemistry analyzer

BIOBASE, Hitachi, Olympus, Roche, Beckman, Toshiba, Shimadzu, Abbott, Sysmex, Mindray, etc.

OEM Services Available:

Bulk package: 1L, 2L, 5L, 10L, 25L, 50L, 100L

Applicable Models



Auto ELISA Processor



01

Sample Module

With hydrophobic membrane treatment precision probe and automatic washing system, ensure adding volume accurately and preventing cross contamination effectively.

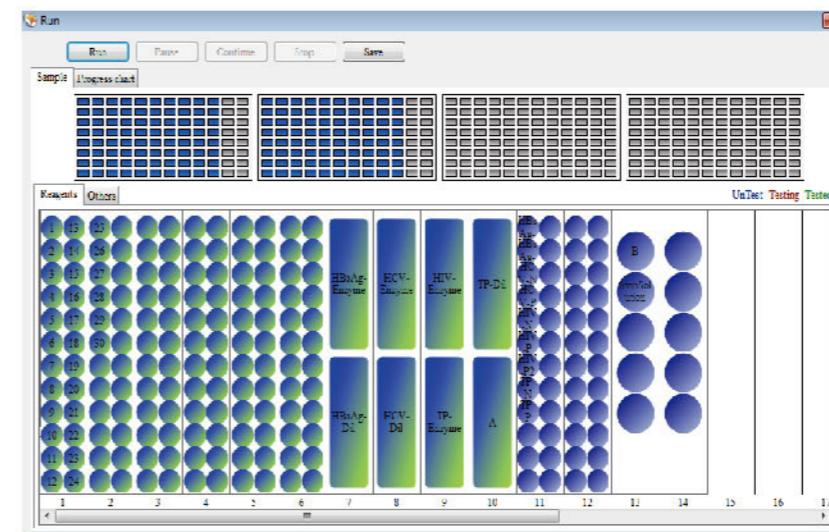
Email: export@biobase.com

Website: www.biobase.cc / www.meihuatrade.com

02

Sample & Reagent & Dilution Rack Module

Using original sample tube and reagent bottles directly, preventing cross contamination effectively. Onboard large capacity and optional programmable dilution module.



03

Software Module

User-friendly Windows system, easy and simple to operate. LIS (Laboratory information system) is available.

04

Microplate Reader & Washer Module

Washing probe is adjusted automatically to ensure washing efficiently without residual, having unique integrative washing and reading module system. Reading unit is composed of high precision optics to ensure the accuracy and stability of testing results.

Email: export@biobase.com

Website: www.biobase.cc / www.meihuatrade.com



05 Testing Range:

- | | |
|--------------------------------|--|
| ①. TORCH SERIES | Toxo, RV, CMV, HSV etc. |
| ②. HEPATITIS SERIES | HAV, HBV, HCV, HDV, HEV etc. |
| ③. VENEREAL SERIES | HIV, TP, MP, CT etc. |
| ④. THYROID AUTOIMMUNITY SERIES | T3, T4, FT3, TSH etc. |
| ⑤. ENDOCRINE SERIES | E2, E3, LH, FSH, HCG, Pro, PRL etc. |
| ⑥. TUMOR MARKER SERIES | CEA, AFP, PSA, F-PSA, CAL9-9, CAL 25, CA15-3, CA242. |

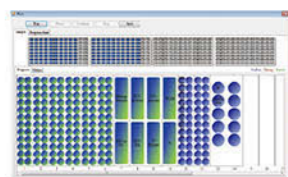
Auto ELISA Processor BIOBASE 1000



Website: www.biobase.cc / www.meihuatrade.com

Features:

- ①. 1 robotic arm, 1 pipetting probe (10~1000µl).
- ②. 2 unit 96 well microplates (independent incubating).
- ③. 1 unit reader& washer (auto reading and washing).



Software Module

User-friendly Windows system;
LIS system available.



Sample Module

Hitech teflon coating probe to
prevent cross contamination.



Sample & Reagent & Dilution Rack Module

Original sample tubes available;
Rack positions programmable.



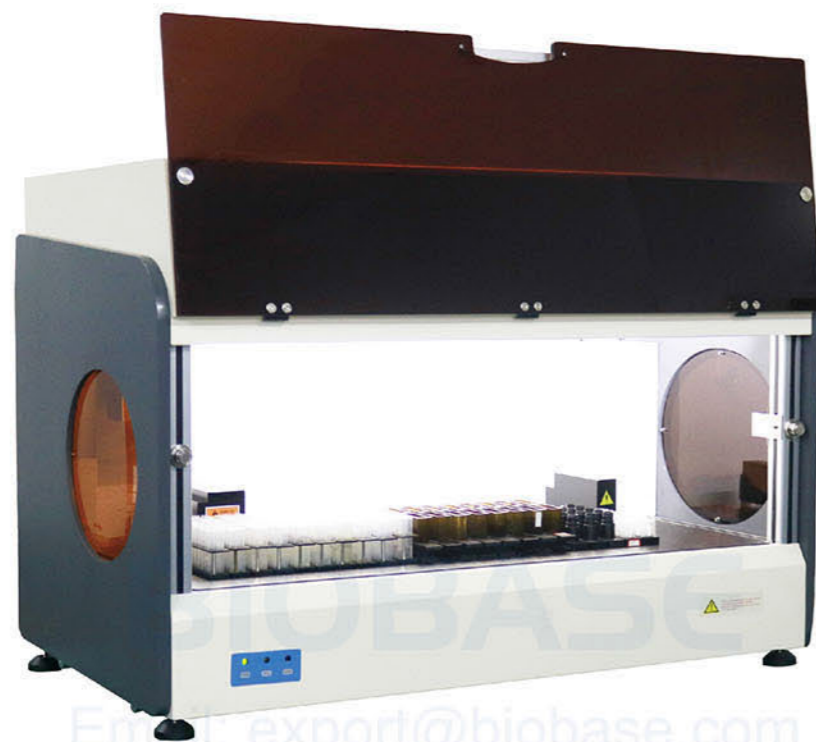
Microplate Reader & Washer Module

Modularized automatic control
reading and washing system.

Parameters:

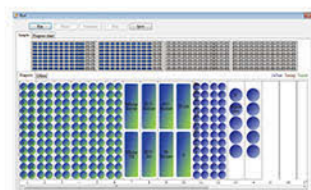
Model	BIOBASE 1000	
Sample Unit	Sample Racks	80 sample positions (tubes 13mm)
	Pipetting	10~1000µl
	Dispensing System	1 aspirating and dispensing probe (X-Y-Z movement)
Reagent Unit	Reagent Racks	8 + 1 reagent racks, editable
	Pipetting Range	10~1000µl, 1µl stepping
	Pipetting Precision	(100µl) CV≤0.5%
	Dispensing Time	5 minutes to whole 96 well microplates
Incubation Unit	Incubation	2 independent Incubators
	Temperature Range	RT to 45 °C
	Temperature Accuracy	±0.5°C
Washing Unit	Washing Probes	Two line 8-nozzle manifolds
	Wash Containers	2 wash buffers 2L, 1 distilled water, 1 waste water
	Washing Residual	≤2µl
Reading Unit	Reading Channels	8 independent photometric channels, mono and dichromatic reading
	Absorbance	0.0~3.0 OD
	Spectral Range	400~700nm
	Optical Filters	2 standard filters (450,630nm); 2 more on request (405nm/450nm/492nm/630nm)
Data Management	Software	Windows 7
	LIS System	Bi-direction, support HL7 protocol
	Results	Absorbance and results reviewable by software
	Printer	External optional
Working Conditions	Power Supply	AC220V±10% 50/60Hz; 110V±10% 60H, 400W
	Temperature	10~30°C
	Humidity	30~80%
Size & Weight	External Size (W*D*H)	879*660*764mm
	Net Weight	112kg
	Package Size(W*D*H)	1020*810*1240mm
	Gross Weight	160kg

Auto ELISA Processor BIOBASE 2000



Features:

- ①. 1 robotic arm, 2 pipetting probes (10~1000µl).
- ②. 4 unit 96 well microplates (independent incubating).
- ③. 1 unit reader& washer (auto reading and washing).



Software Module
User-friendly Windows system;
LIS system available.



Sample Module
Hitech teflon coating probe to
prevent cross contamination.



Sample & Reagent & Dilution Rack Module
Original sample tubes available;
Rack positions programmable.



Microplate Reader&Washer Module
Modularized automatic control
reading and washing system.

Parameters:

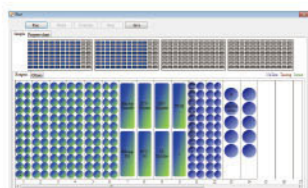
Model	BIOBASE 2000	
Sample Unit	Sample Racks	552 sample positions (tubes 13mm)
	Pipetting	8~1000µl
	Dispensing System	2 aspirating and dispensing probe (X-Y-Z movement)
Reagent Unit	Reagent Position	23 reagent racks, editable
	Pipetting Range	8~1000µl, 1µl stepping
	Pipetting Precision	(100µl)CV≤0.5%
Washing Unit	Dispensing Time	4 minutes to whole 96 well microplates
	Washing Probes	Two line 8-nozzle manifolds
	Wash Containers	Cleaning fluid (15L), waste water (25L), Buffer 1 (5L), Buffer 2 (2L), Buffer 3 (2L), Buffer 4 (2L), with liquid level-sensing, liquid shortage and full alarm
	Waste Containers	25L with waste full sensor
	Washing Residual	< 2µl
Reading Unit	Reading Channels	8 independent photometric channels, mono and dichromatic reading
	Absorbance	0.0~3.0 OD
	Spectral Range	400~700nm
	Optical Filters	2 standard filters (450,630nm); 2 more on request (405nm/450nm/492nm/630nm)
Incubation Unit	Reading Accuracy	±1% from 0~1.5OD, ±2% from 1.5~3.0 OD
	Incubators	4 independent units
	Temperature Range	RT to 45°C
Data Management	Temperature Accuracy	±0.5°C
	Software System	Windows 7
	LIS System	Bi-direction, support HL7 protocol
Working Conditions	Results	Absorbance and results reviewable by software
	Printer	External optional
	Power Supply	AC220V±10% 50/60Hz; 110V±10% 60Hz, 400W
Size & Weight	Temperature	10~30°C
	Humidity	30~80%
	External Size(W*D*H)	1235*710*880mm
	Net Weight	146kg
	Package Size(W*D*H)	1380*860*1435mm
	Gross Weight	220kg

Auto ELISA Processor BIOBASE 4000



Features:

- ① 1 robotic arm, 4 pipetting probe (10~1000µl).
- ② 8 units 96 well microplates (independent incubating).
- ③ 2 unit readers, 2 units washer (auto reading and washing).



Software Module
User-friendly Windows system;
LIS system available.



Sample Module
Hitech teflon coating probe to
prevent cross contamination.



Sample & Reagent & Dilution Rack Module
Original sample tubes available;
Rack positions programmable.



Microplate Reader & Washer Module
Modularized automatic control
reading and washing system.

Parameters:

Model	BIOBASE 4000	
Sample Unit	Sample Racks	Standard 600 sample positions
	Sample Tubes	11.5~13mm
	Pipetting	8~1000µl
	Dispensing System	4 aspirating and dispensing probe (X-Y-Z movement)
Reagent Unit	Reagent Position	23 reagent racks, editable
	Pipetting Range	8~1000µl, 1µl stepping
	Pipetting Precision	(100µl)CV≤0.5%
	Dispensing Time	3 minutes to whole 96 well microplates
Washing Unit	Washing Probes	Two line 8-nozzle manifolds
	Wash Containers	1 cleaning fluid 15L, 1 waste water 25L, 1 buffer 5L and 3 buffer 2L, with liquid level sensor, liquid shortage and full alarm
	Washing Residual	<2µl
Reading Unit	Reading Channels	8 independent photometric channels, mono and dichromatic reading
	Absorbance	0.0~3.0 OD
	Spectral Range	400~700nm
	Optical Filters	2 standard filters (450,630nm); 2 more on request (405nm/450nm/492nm/630nm)
Incubation Unit	Incubators	8 independent incubators
	Temperature Range	RT to 45 °C
	Temperature Accuracy	±0.5°C
Data Management	Software	Windows 7
	LIS System	Bi-direction, support HL7 protocol
	Results	Absorbance and results reviewable by software
	Printer	External optional
Working Conditions	Power Supply	AC220V±10% 50/60Hz; 110V±10% 60Hz, 800W
	Temperature	10~30°C
	Humidity	30~80%
Size & Weight	External Size (W*D*H)	1343*860*1700mm
	Net Weight	215kg
	Package Size(W*D*H)	Machine: 1520*970*1108mm; Base Stand: 1520*1020*1378mm
	Gross Weight	Machine: 220kg; Base stand: 165kg

Elisa Microplate Reader BIOBASE-EL10A

Features:

- ①. Three kinds of linear vibration plate function.
- ②. Center positioning function, accurate and reliable.
- ③. Industrial grade color LCD display, touch screen operation.
- ④. Unique open Cut-Off judgement formula.
- ⑤. Eight channel optical fiber measurement system.
- ⑥. End point method, two point method, dynamics, single/dual wavelength test mode.
- ⑦. Configure the inhibition rate measurement module, dedicated to the field of food safety.



Parameters:

Model	BIOBASE-EL10A
Lamp	12V/22W, Halogen-Tungsten lamp
Optical Path	8 channel vertical light path system
Wavelength Range	400~800nm
Filter	Default configuration 405, 450, 492, 630nm, can be installed up to 10 filters
Reading Range	0~4.000Abs
Resolution	0.001Abs
Accuracy	≤ ±0.01Abs
Stability	≤ ±0.003Abs
Repeatability	≤0.3%
Vibration Plate	Three kinds of linear vibration plate function, Adjustable 0~255 seconds
Display	8 inch color LCD screen, display the entire ELISA Plate board information, touch screen operation
Software	Professional software, can store 200 groups program, 100000 sample results, More than 10 kinds of curve fitting equations
Power Supply	AC110/220V±10%, 60/50Hz
Package Size(W*D*H)	550*395*470mm
Gross Weight	16kg

Elisa Microplate Washer BK-9622

Features:

- ①. Up to 100 washing programs, each program independently stores the name of an experiment item and the shape parameter of the microplate.
- ②. A variety of lotion channels are optional, which can be selected by default or manual switching.
- ③. With the function of washing liquid washing pipeline, the washing time can be adjusted, effectively preventing the formation of crystallization.
- ④. The lotion bottle has a uniform volume scale, which is convenient for the preparation of working liquid, and the automatic alarm function is full of waste liquid.



Parameters:

Model	BK-9622
Microplate Types	Applicable to all types of microplates. Flat bottom, V-shaped bottom, U-shaped bottom, round bottom, 96-well
Washing Mode	2 kinds of Automatic washing, Soaking and Shaking, to reduce the interference adsorption during the reaction; 0-999 seconds adjustable.
Average Residue	<1μl
Number of Microplate	1- 12 rows adjustable
Cleaning Head	8 channels and 12 channels
Liquid Suction Time	0.1-9.9 seconds adjustable, with an interval of 0.1 seconds
Washing Programs	Up to 100 programs, each program independently stores the name of an experiment item and the shape parameter of the microtiter plate
Flushing Pipeline Time	0-240 seconds adjustable
Display	5.0 inch LCD screen
Liquid Injection Channels	3 (2 types of lotion and 1 type of distilled water)
Cleaning Needle Position	5 types adjustable (Horizontal, Left, Center, Right, Bottom)
Packing Size(W*D*H)	710*510*451mm
Gross Weight	23kg

Elisa Microplate Washer BIOBASE-MW9622

Features:

- ①. Keypress operation
- ②. Detachable microplate holder.
- ③. 3.5" LCD display with back light.
- ④. Automatic rinse by distilled water.
- ⑤. Waste water sensor avoids overflow.
- ⑥. Suspend or terminate in the cleaning process is available.
- ⑦. Default settings or manual operation are both available.
- ⑧. The control technology for pump pressure avoids clogging in needles.
- ⑨. Independent storage project name and microplate shape parameter.



Parameters:

Model	BIOBASE-MW9622
Microplate Types	48-well, 96-well
Manifold Types	8 or 12 ways
Wash Time	1~99 times adjustable
Wash Lines	1~12 lines selectable
Residual Volume	<0.7µl per well
Wash Mode	Plates or strips
Dispensing Uniformity	CV<1.5%
Dispensing Volume	50-950µl, interval 50µl adjustable
Dispensing Channels	3 channels
Soaking and Shaking Time	0~999(seconds/minutes/hours) adjustable
Aspiration Time	0.1~9.9 seconds adjustable, interval 0.1 second
Pipeline Wash Time	0~240 seconds adjustable
Auto Wash Interval	0~20 plates
Power Supply	AC220V±10% 50/60Hz; 110V±10% 60Hz, 50W
Package Size(W*D*H)	640*468*458mm
Gross Weight	13kg

Microplate Incubator BK-FY400/500

Features for BK-FY400:

- ①. LCD display.
- ②. One-touch knob.
- ③. Double heating system.
- ④. Microprocessor and temperature control.



Features for BK-FY500:

- ①. Easy to set up and use, real time display.
- ②. Supports standard microplates and deep well plates.
- ③. Automatic preheating and power recovery.
- ④. Temperature calibration function.
- ⑤. Over temperature protection system.



Parameters:

Model	BK-FY400	BK-FY500
Temp. Setting Range	/	0°C~80°C
Temp. Control Range	RT+5°C~80°C	
Time Range	1min~99h59min	
Temp. Accuracy	≤±0.5°C	
Display Accuracy	0.1°C	
Temp. Uniformity	≤±0.5°C	
Heating Time	≤10min(from 25°C to 80°C)	
Max. Height of Plate	22mm	/
Capacity	2 microplates	4 microplates or deep well plates
Power Supply	AC220V±10% 60/50Hz; 100V±10% 60Hz, 120W	
Dimension	280*270*140mm	340*320*200mm
Net Weight	4kg	7kg
Package Size(W*D*H)	410*350*235mm	475*450*315mm
Gross Weight	6kg	8kg

Elisa Reagent Kits



Parameters:

Product Name	Format	Shelf life(months)	Storage Temperature
Infectious Disease Elisa			
HAV-Ab	96T	12	2~8 °C
HBsAg	96T	12	2~8 °C
HBsAb	96T	12	2~8 °C
HBeAg	96T	12	2~8 °C
HBeAb	96T	12	2~8 °C
HBcAb	96T	12	2~8 °C
HBcAb-IgM	96T	12	2~8 °C
HBsAb Quantitative	96T	12	2~8 °C
HBV Pre-S1 Ag	96T	12	2~8 °C
HCV Ab	96T	12	2~8 °C
HCV-IgM	96T	12	2~8 °C
HIV 1+2 Ab	96T	12	2~8 °C
HIV 1+2 Ag/Ab	96T	12	2~8 °C
Syphilis anti-TP	96T	12	2~8 °C
HDV-IgG	96T	12	2~8 °C
HDV-IgM	96T	12	2~8 °C
HEV-Ab	96T	12	2~8 °C
HEV-Ag	96T	12	2~8 °C
HTLV 1+2 Ab	96T	12	2~8 °C
Fertility Elisa			
LH	96T	12	2~8 °C
B-HCG	96T	12	2~8 °C
Testosterone(T)	96T	12	2~8 °C
FSH	96T	12	2~8 °C
Progesterone(P)	96T	12	2~8 °C
Prolactin	96T	12	2~8 °C
E2	96T	12	2~8 °C



Parameters:

Product Name	Format	Shelf life(months)	Storage Temperature
Tumour Elisa			
FT3	96T	12	2~8 °C
FT4	96T	12	2~8 °C
T3	96T	12	2~8 °C
T4	96T	12	2~8 °C
TSH	96T	12	2~8 °C
Insulin(Ins)	96T	12	2~8 °C
C-P	96T	12	2~8 °C
AFP	96T	12	2~8 °C
CEA	96T	12	2~8 °C
Ferritin	96T	12	2~8 °C
PSA	96T	12	2~8 °C
CA50	96T	12	2~8 °C
CA125	96T	12	2~8 °C
CA153	96T	12	2~8 °C
CA199	96T	12	2~8 °C
Torch Elisa			
CMV (Cytomegalovirus Antibody) IgG	96T	12	2~8 °C
CMV (Cytomegalovirus Antibody) IgM	96T	12	2~8 °C
RV (Rubella Antibody) IgG	96T	12	2~8 °C
RV (Rubella Antibody) IgM	96T	12	2~8 °C
TOX (Toxoplasma Antibody) IgG	96T	12	2~8 °C
TOX (Toxoplasma Antibody) IgM	96T	12	2~8 °C
HSV-I (Herpes Simplex Virus I Antibody) IgM	96T	12	2~8 °C
HSV-II (Herpes Simplex Virus II Antibody) IgM	96T	12	2~8 °C
Others			
COX (Coxsackievirus Antibody) IgG	96T	12	2~8 °C
COX (Coxsackievirus Antibody) IgM	96T	12	2~8 °C
MV (Measles Virus Antibody) IgG	96T	12	2~8 °C
MV (Measles Virus Antibody) IgM	96T	12	2~8 °C
TB (Mycobacterium Tuberculosis Antibody) IgG	96T	12	2~8 °C
TB (Mycobacterium Tuberculosis Antibody) IgM	96T	12	2~8 °C
RSV (Respiratory Syncytial Virus Antibody) IgM	96T	12	2~8 °C
Mg (Mycoplasma Genitalium Antibody) IgG	96T	12	2~8 °C
HPV (Human Papilloma Virus Antibody) IgG	96T	12	2~8 °C
ds-DNA (Double-stranded DNA Antibody) IgG	96T	12	2~8 °C
ss-DNA (Single-stranded DNA Antibody) IgG	96T	12	2~8 °C
ANA (Antinuclear Antibody) IgG	96T	12	2~8 °C
Vitamin D (For Research Use Only)	96T	12	2~8 °C
Vitamin A (For Research Use Only)	96T	12	2~8 °C
Vitamin C (For Research Use Only)	96T	12	2~8 °C
Vitamin B12 (For Research Use Only)	96T	12	2~8 °C

ESR Analyzer EA20/EA40

Features:

- ①. Large color display with touch screen.
- ②. Throughput up to 80T/H.
- ③. Two kinds of measuring time: 30 mins or 60 mins.
- ④. ESR curve display and print out.
- ⑤. Barcode reader optional.
- ⑥. LIS system available.



Parameters:

Model	EA20	EA40
Application	Erythrocyte sedimentation rate analysis	
Measuring Principle	Infrared sensor	
Analysis Result	Westergren ESR value (mm/hr)	
Throughput	Up to 80 samples per hour	
Reading Channels	20	40
Loading Capacity	20 samples at same time	40 samples at same time
Loading Pattern	Random	
Measuring Time	30 minutes or 60 minutes selectable	
Sample Interval	3 minutes	
Measurement Range	(1~140)mm/h	
Temperature Compensation	Refer to 18°C automatically (selectable)	
Reading Resolution	±0.1mm	
Result Resolution	1mm/1h, 1mm/2h	
Blood Level Range	50~64mm	
Display	LCD display	
Input	Touch screen	
Interface	RS-232	
Print	Built-in thermal printer	
Storage	4,000 results	
Power supply	AC110/220V±10%, 60/50Hz, 50W	
Operation conditions	Temperature 5~40°C; Humidity≤80%	
Package Size(W*D*H)	380*700*460mm	
Gross Weight	25kg	

Auto Coagulation Analyzer BK1000A/BK1000B/BK1000C

Features:

- ①. Optical coagulation testing theory, PT derived FIB function.
- ②. With automatic and manual dual-mode test functions.
- ③. Use tilt reagent position, avoid wasting.
- ④. With LED lighting function.
- ⑤. Sampling probe with liquid level sensor and constant heating function, avoid cross-contamination.



Parameters:

Model	BK1000A	BK1000B	BK1000C
Analysis Method	Coagulation method		Coagulation method, Immunoturbidimetry
Analysis Items	PT, APTT, TT, FIB		PT, APTT, TT, FIB, DD, FDP
Throughput	140 Tests/hour		160 Tests/hour
Sample Positions	5		6
Tilt Reagent Position	6	6 refrigerated reagent positions	11 refrigerated reagent positions
Interchangeable Reagent Position	/		Yes
Sample Probe	Liquid level sensor and constant heating function		
Calibration	Automatic or manual calibration		
Lighting	LED		
Alarm	Abnormal test results alarm, insufficient cleaning fluid alarm, waste liquid overflow alarm		
STAT Function	Emergency sample available		
Software	Windows 7/8/10 or above, LIS system available		
Power Supply	AC220V±10% 60/50Hz; 110V±10% 60Hz, 320W		
Package Size(W*D*H)	630*610*520mm		
Gross Weight	35Kg		

Semi-auto Coagulation Analyzer COA01/COA02/COA04



COA01



COA04



COA02

Features:

- ①. Parameters: PT, APTT, TT, FIB, etc.
- ②. Principle: Clotting, optical method.
- ③. Precise electronic pipette.
- ④. Languages: English, French, Spanish, Portuguese, etc.
- ⑤. Automatic start reagent addition.
- ⑥. Thermal printer, auto & manual print.
- ⑦. LIS system available.

Reagent Parameters:

Item	Sample volume	Reagent 1	Reagent 2	Incubating time	CV%
PT	20µl	40µl	/	120s	≤5%
APTT	20µl	20µl	20µl	180s	≤5%
TT	30µl	30µl	/	120s	≤8%
FIB	40µl	20µl	/	180s	≤5%

Parameters:

Model	COA01	COA02	COA04
Testing Channel	1	2	4
Display	4.3"	5"	
Cuvette Incubation Positions	5	12	24
Reagent Incubation Positions	2	5	6
Wavelength	LED 470nm		
Sample Type	Plasma		
Results	10,000 results storage		
Sample Volume	20~40µl		
Available Units	Seconds, Ratio, %, g/L		
Incubation Temperature	37.0±1.0°C		
Relative Humidity	≤85%		
Precision	PT, APTT, FIB≤5%; TT≤8%(Normal sample)		
Deviation between Channels	≤5%		
Power Supply	AC100~240V, 50/60Hz		
External Size	290*260*135mm	345*325*145mm	375*335*175mm
Net Weight	2.1kg	4.5kg	5.2kg
Package Size	360*360*260mm	440*420*350mm	440*420*340mm
Gross Weight	6.5kg	7kg	7.5kg

Auto Hematology Analyzer BK-5000

Features:

- ①. Touch Screen display
- ②. 3-part differentiation of WBC
- ③. 21 parameters + 3 histograms
- ④. Throughput: 60 samples per hour



Technical Specifications:

Model	BK-5000		
Throughput	60 tests/hour		
Measuring Principle	Coulter principle Colorimetry hamoglobin determination		
Parameters	WBC, LY#, MID#, GR#, LY%, MID%, GR%, RBC, HGB, HCT, MCV, MCH, MCHC, RDW-SD, RDW-CV, PLT, MPV, PDW, PCT, P-LCR, P-LCC		
Histograms	3 Histograms (including WBC, RBC, PLT)		
Sampler Volume	Predilute 20µl Whole blood 10µl		
Display	8" color touch screen display		
Intelligent reagent management function	Reagent information and residual display		
Carryover	WBC≤1.5% RBC,HGB<1.0% , PLT≤2%		
Printer	External printer		
Input and output	1 RS232 , keyboard , Mouse, 4USB, LAN		
Performance	Parameter	Linearity range	Precision (CV%)
	WBC(10 ⁹ /L)	0.0-100.0	2.0 (4.0-10.0)
	RBC(10 ¹² /L)	0.00-9.99	1.5 (3.50-5.50)
	HGB(g/L)	0-300	1.0 (110-160)
	PLT(10 ⁹ /L)	0-1000	5.0 (100-300)
Option	Barcode scanner, LIS		
Operating Environment	Temperature 10-35 °C Humidity ≤90%		
Power Supply	AC110/220V±10%, 60/50 Hz		
Package Size(mm)	630*600*700	Reagent Package Size(mm)	390*280*260
Gross Weight(kg)	25	Reagent Gross Weight(kg)	13

Auto Hematology Analyzer BK-6190

Features:

- ①. Throughput: 60T/H.
- ②. 8 inch touch screen.
- ③. 20 parameters + 3 histograms.
- ④. 3 counting modes.
- ⑤. 100,000 sample results.
- ⑥. Support LIS and external printer.



Parameters:

Model	BK-6190					
Throughput	60 Tests/hour					
Measuring Principle	Impedance for cell counting Cyanide-free method for HGB					
Aperture Diameter	WBC chamber: 100µm, RBC/PLT chamber: 70µm					
Parameters	WBC, Neu#, Lym#, Mid#, Neu%, Lym%, Mid%, RBC, HGB, HCT, MCV, MCH, MCHC, RDW-SD, RDW-CV, PLT, MPV, PDW, PCT, P-LCR					
Histograms	3 histograms(including WBC, RBC, PLT histograms)					
Sample Volume	Normal: 10µl; Prediluted: 20µl					
Calibration	Manual & auto calibration					
Counting Modes	Venous, capillary, prediluted					
Printer	Built-in thermal printer, USB to external printer(optional)					
Data Input	8 inch touch screen, keyboard, mouse					
Output	RS232 port, USB port, VGA port. LIS system available					
Storage	100,000 results with histogram					
Carry-over Rate	Parameter	WBC	RBC	HGB	PLT	
	CV	≤ 2%	≤ 1%	≤ 2%	≤ 2%	
Background	Parameter	WBC	RBC	HGB	HCT	PLT
	Background	≤ 0.2×10 ⁹ /L	≤ 0.02×10 ¹² /L	≤ 1 g/L	≤ 0.5%	≤ 10×10 ⁹ /L
Precision	Parameter	WBC	RBC	HGB	MCV	PLT
	CV	≤ 2.0%	≤ 1.9%	≤ 1.9%	≤ 0.4%	≤ 4.0%
	Measurement range	(4.0-15.0×10 ⁹)/L	(3.5-6.0×10 ¹²)/L	(110.0-180.0g)/L	(80.0-110.0)fL	(100.0-500.0×10 ⁹)/L
Linearity	Parameter	WBC	RBC	HGB	PLT	
	Measurement range	(0-5.9×10 ⁹)/L (6.0-99.9×10 ⁹)/L	(0-0.99×10 ¹²)/L (1.0-9.99×10 ¹²)/L	(0-99.0g)/L (100.0-300.0g)/L	(0-99×10 ⁹)/L 100-999×10 ⁹ /L	
	CV	(±0.3×10 ⁹)/L ±5%	(±0.05×10 ¹²)/L ±5%	(±2.0g)/L ±2%	(±8.0×10 ⁹)/L ±10%	
Power Supply	AC 220±10%, 60/50Hz, 110±10%, 60Hz					
Package Size	580*470*590mm(W*D*H)			Reagent Package Size	450*410*310mm(W*D*H)	
Gross Weight	27kg			Reagent Gross Weight	23kg	

5-Part Auto Hematology Analyzer BK-6310

Features:

- ①. Throughput: 60T/H.
- ②. 14 inch touch screen.
- ③. Tri-angle laser scatter + flow cytometry method + impedance method for RBC and PLT counting.
- ④. 3D holographic scattergram displays the accurate 5 part differentiation of WBC.
- ⑤. Large storage capacity: 100,000 results (including histogram, scattergram, patient information).



Parameters:

Model	BK-6310			
Throughput	60 Tests/hour			
Assay Items	5 parts, 29 parameters, 3 histograms			
Principle	Tri-angle laser scatter, Flow cytometry method, 3D scattergram analysis, Impedance method for RBC and PLT counting, Cyanide free reagent for HGB test			
Test Mode	CBC mode, CBC+DIFF mode Venous whole blood, Capillary whole blood and Prediluted			
Parameters	WBC, RBC, HGB, HCT, MCV, MCH, MCHC, RDW-SD, RDW-CV, PLT, MPV, PCT, PDW, P-LCR, P-LCC, NEU%, LYM%, MON%, EOS%, BAS%, NEU#, LYM#, MON#, EOS#, BAS# 4 Research parameter: ALY%, ALY#, IG%, IG#			
Performance	Item	Linearity range	Carry Over	CV
	WBC	0~300x10 ⁹ /L	≤ 0.5%	≤ 2.0%
	RBC	0~8.00x10 ¹² /L	≤ 0.5%	≤ 1.5%
	HGB	0~250g/L	≤ 0.5%	≤ 1.5%
	PLT	0~3000x10 ⁹ /L	≤ 1.0%	≤ 4.0%
Sample Volume	CBC+DIFF mode: ≤20μl CBC mode: ≤10μl			
Storage	100,000 results including histogram, scattergram and patient information			
Interface	4 USB ports, 1LAN port Bi-direction LIS, support HL7 protocol, Internal RFID reader			
Power Supply	AC220V±10% 50/60Hz; 110V±10% 60Hz; 400VA			
Package Size	670*590*790mm (W*D*H)			
Gross Weight	53kg			
Reagent Package Size	320*320*290mm (W*D*H)			
Reagent Gross Weight	22kg			

5-Part Auto Hematology Analyzer BK-6400

Features:

- ①. 60 Tests/hour.
- ②. Laser scatter technology.
- ③. Constant linear sheath flow.
- ④. 2 test modes & 2 sample modes.
- ⑤. 3-D topographic maps for WBC.
- ⑥. Integral titanium incubation system.
- ⑦. 28 parameters, 2 histograms, 2 scattergrams.



Parameters:

Model	BK-6400			
Throughput	60 Tests/hour			
Assay Items	5 parts, 28 parameters, 2 histograms, 2 scattergrams			
Test mode	CBC+5DIFF, CBC			
Measuring Principle	Laser Scatter Technology			
Testing Items	Regular Parameters: WBC, RBC, HGB, HCT, MCV, MCH, MCHC, RDW-SD, RDW-CV, PLT, PDW, MPV, PCT, P-LCR, NEU#, NEU%, LYM#, LYM%, MON#, MON%, EOS#, EOS%, BAS#, BAS%			
	Research Parameters: ALY#, ALY%, IG#, IG%			
Performance	Item	Linear range	Carry over	CV
	WBC	1.0~99.9*10 ⁹ /L	≤0.5%	≤2.0%
	RBC	0.3~7.0*10 ¹² /L	≤0.5%	≤1.5%
	HGB	20~240g/L	≤0.5%	≤1.5%
	PLT	20~999*10 ⁹ /L	≤1.0%	≤4.0%
Storage	100,000 results storage including histogram and scattergram			
LIS Interface	Support HL7 protocol			
QC and Calibration	Multiple QC rules, including L-J, X-B etc			
	Auto and manual calibration function for both whole blood mode and pre-diluted blood mode			
Incubation	Integral titanium incubation system			
Operation Environment	Temperature: 15~30°C			
	Humidity: 30%~85%			
Power supply	AC220V±10% 50/60Hz; 110V±10% 60Hz, 600VA			
Package Size	730*610*830mm(W*D*H)			
Gross Weight	80kg			
Reagent Package Size	320*320*300mm(W*D*H); 340*290*280mm(W*D*H)			
Reagent Gross Weight	24kg			

5 Part Auto Hematology Analyzer BK-6500



Email: export@biobase.com

Website: www.biobase.cc / www.meihuatrade.com



2 Test Modes:
CBC+5DIFF mode
CBC mode



2 Sample Modes:
Whole blood sample mode
Pre-diluted blood sample mode

Features:

- ①. Laser scatter technology.
- ②. Constant linear sheath flow.
- ③. 3-D topographic technology.
- ④. Auto-loader, 60 samples/hour.
- ⑤. Integral titanium incubation system.
- ⑥. 28 parameters, 2 histograms, 2 scattergrams.
- ⑦. Random direction tube barcode scanning technology (optional).

Parameters:

Model	BK-6500			
Throughput	60 Tests/hour			
Assay Items	5 parts, 28 parameters, 2 histograms, 2 scattergrams			
Test mode	CBC+5DIFF, CBC			
Measuring Principle	Laser Scatter Technology			
Sample Modes	Autoloader: 50 tubes, auto mixing, random direction tube barcode scanning technology			
	Close tube: STAT priority, support both whole blood and capillary blood samples			
Testing Items	Regular Parameters: WBC, RBC, HGB, HCT, MCV, MCH, MCHC, RDW-SD, RDW-CV, PLT, PDW, MPV, PCT, P-LCR, NEU#, NEU%, LYM#, LYM%, MON#, MON%, EOS#, EOS%, BAS#, BAS%			
	Research Parameters: ALY#, ALY%, IG#, IG%			
Linearity Range	Item	Linear range	Carry over	CV
	WBC	1.0~99.9*10 ⁹ /L	≤0.5%	≤2.0%
	RBC	0.3~7.0*10 ¹² /L	≤0.5%	≤1.5%
	HGB	20~240g/L	≤0.5%	≤1.5%
	PLT	20~999*10 ⁹ /L	≤1.0%	≤4.0%
Storage	100,000 results storage including histogram and scattergram			
LIS Interface	Support HL7 protocol			
QC and Calibration	Multiple QC rules, including L-J, X-B etc. Auto and manual calibration function			
Incubation	Integral titanium incubation system			
Multi-warning	Reagent inventory check; Abnormal original data warning; Multi warning flags			
Power supply	AC220V±10% 50/60Hz; 110V±10% 60Hz, 600VA			
Computer	External optional			
Package Size	712*587*730mm(W*D*H)			
GrossWeight	104kg			
Reagent Package Size	320*320*300mm(W*D*H); 340*290*280mm(W*D*H)			
Reagent Gross Weight	24kg			

Fast Gradient Thermal Cycler PCR BK-GR300



Features:

- ①. Newest generation peltier-based technology, more steady, reliable and durable.
- ②. 7 inch color full touch screen, graphical display of protocols.
- ③. Effortlessly interchangeable reaction modules that swap in seconds without tools.
- ④. 15000 protocols storable on board and unlimited storage of protocols with USB flash drive.

Parameters:

Model	BK-GR300	
Gradient Module	96 Module	96 wells*0.2ml
	9677 Module	96 wells*0.2ml+77wells*0.5ml
	384 Module	384 wells
	Multi-purpose	9677 Module+In-situ adapter
	Display	7 inch color touch screen, graphical display of protocols and running status
	Communications	2 USB 2.0 and LAN
Temperature	Block Temperature Range	0 °C~105°C
	Max. Heating/Cooling Rate	6°C/s
	Temperature Uniformity	≤±0.2°C (at 95°C)
	Temperature Accuracy	≤±0.1°C (35°C~100°C)
	Display Resolution	0.1°C
	Mode of Temperature Control	Sim-tube & Block mode
Gradient	Gradient Accuracy	≤±0.1°C (35°C~100°C)
	Column Uniformity	≤±0.2°C (at 95°C)
	Gradient Range	30°C~105°C
	Temp. Differential Range	1~30°C
	Gradient Capability	12 Column
Software	Max. No. of Programs	Max. 15,000 programs onboard, unlimited storage of protocols with USB flash drive
	Max. Step	30 steps
	Max. Cycle	100 typical cycles, max. 60,000 nesting cycles
	Time & Temp. Increment/Decrement	Yes, available for Long PCR & Touchdown PCR
	Auto Pause / Auto Restart	Yes
	Multi-user Log in	With password-based authentication prevents from view, copy and alteration of protocols
	Tm Calculator	Automatically calculate the melting and annealing temperature with two primer sequences
	Hold at 4°C	Yes, an infinite incubation time at low temperature for overnight working
	Program Wizard	Yes, create PCR protocols with only a few clicks
	Running Report	Yes, provide objective and precise information for the whole experiment
Heat Lid	PC Connection	PC remote control to manage more than 120 units of A300 across the network
	Height of Heat Lid	Steplessly adjustable Lid, accommodates all kinds of PCR tubes, strips and plates
	Open Method	Innovative "TOP-OPEN" technology realizes open and lift in one step
	Heat Lid Temperature Range	30~112°C
Others	Auto Shut-off	Yes
	Power Supply	85~265V, 50~60Hz Max. 600W
	Package Size(W*D*H)	362*256*255mm
	Gross Weight	10kg

Classic Thermal Cycler BK-AI/BK-AII



Features:

- ①. 7" TFT color touch screen, graphically protocol edit and running.
- ②. Outstanding uniformity, producing best PCR result.
- ③. Effortlessly interchange the modules without tool.
- ④. 10,000 protocols storable on board.

Parameters:

Model	BK-AI	BK-AII
	Standard Thermal Cycler	Gradient Thermal Cycler
Optional Module	96 Module: 96 wells*0.2ml	
	9677 Module: 96 wells* 0.2ml+77 wells*0.5ml	
	384 Module: 384 wells	
	Multi-purpose Module: 9677 Module+In-situ Adapter	
Heating and Cooling Technology	Newest generation Peltier-based technology, with long life up to 1,000,000 cycles	
Display	7" Color Touch Screen, graphical display of protocols and running status	
Language	Bilingual: English and Chinese	
USB Flash Drive	Unlimited storage of protocols with USB flash drive	
Communications	USB 2.0, LAN and RS232	
Temperature		
Block Temperature Range	0~105°C	
Max. Heating Rate	5°C/s	
Max. Cooling Rate	5°C/s	
Temperature Uniformity	≤ ±0.2°C(at 95°C)	
Temperature Accuracy	≤ ±0.2°C(35~100°C)	
Display Resolution	0.1°C	
Mode of Temperature Control	Sim-tube & Block mode	
Ramping Rate Adjustable	Yes	

Gradient		
Gradient Accuracy	/	≤ ±0.1°C (35~100°C)
Column Uniformity	/	≤ ±0.2°C (at 95°C)
Gradient Range	/	35~100°C
Temp. Differential Range	/	Max.30°C
Gradient Capability	/	12 Column
Heated Lid		
Height of Heated Lid	Steplessly Adjustable Lid, accommodates a wide range of PCR tubes and plates	
Open Method	Innovative TOP-OPEN technology realizes most easy lid-open	
Heated Lid Temperature Range	30~105°C	
Auto Shut-off	Yes	
Software		
Max. Number of Programs	Max.10,000 programs onboard, unlimited storage of protocols with USB flash drive	
Max. Step	30 steps, multiple nesting cycle available	
Max. Cycle	100 typical cycles(duplex nesting 10,000 cycles)	
Time & Temp. Increment/Decrement	Yes, available for long PCR & Touchdown PCR	
Auto Pause/Auto Restart	Yes	
Multi-user Log In	With password-based authentication, protect personal protocols	
Tm Calculator	Automatically calculates the melting and annealing temperature with two primer sequences	
Hold At 4°C	Yes, a below ambient temperature incubation allow PCR results storage overnight	
Program Wizard	Yes, create PCR protocols with only a few clicks	
Running Report	Yes, provide precise data support for analyzing of experimental results	
PC Connection	PC remote control to manage more than 100 units of A100/A200 across the network	
Other Features		
Power	Global switch power supply: 85~265V, 50-60Hz Max.600W	
Packing Size(L*W*H)	430*340*335mm	
Gross Weight	10kg	

Urine Analyzer UA-100



Features:

- ① LCD display, keyboard operation.
- ② Save data automatically.
- ③ Date and number can be input.
- ④ The color and limpidness can be input.
- ⑤ Single test and continuous test are available.
- ⑥ Adopt luminescence source with high brightness to minimize interference of the environment light.

Parameters:

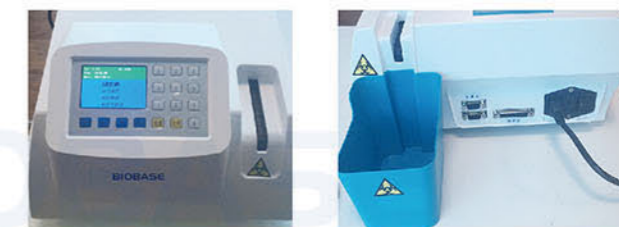
Model	UA-100
Throughput	120 Tests/hour
Display	LCD display
Available Strip	11A
Test Items	Urobilinogen(URO), Bilirubin(BIL), Ketone(KET), Blood(BLD), Protein(PRO), Nitrite(NIT), Leukocytes(LEU), Glucose(GLU), Specific Gravity(SG), PH, Vitamin C(VC)
Principle	Reflection of high-brightness cold light
Printer	Built-in thermal printer, paper type 57mm
Storage	1000 patient datas
Working Environment	Temperature: 15~35°C; humidity: 10~85%
Interface	Standard RS-232 port
Power Supply	AC220V±10% 50/60Hz; 110V±10% 60Hz
Package Size(W*D*H)	470*410*230mm
Gross Weight	7kg

Urine Analyzer UA-210



Features:

- ① LED display, keyboard operation.
- ② Automatically collect wasted strips.
- ③ Built-in thermal printer.
- ④ Standard RS-232 port.
- ⑤ Each item sensitivity adjustable.
- ⑥ User can setup abnormal index and mark demarcation point.



Technical Specifications:

Model	UA-210
Throughput	120 Tests/hour
Display	3.5 inch LED display
Available Strip	11A, 14A
Test Item	Leukocyte(LEU), Nitrite(NIT), Urobilinogen(URO), Protein(PRO), PH, Blood(BLD), Specific Gravity (SG), Ketone(KET), Bilirubin(BIL), Glucose(GLU), Ascorbic Acid, Ca, Creatinine(CRE), Microalbumin (MCA)
Principle	By color sensor to test urine strip color changes, calculate concentration values, get semi-quantitative results.
Printer	Built-in thermal printer, paper type 55~57mm
Storage	5,000 patient datas
Working Environment	Temperature: 15~35°C, humidity: ≤85%
Interface	Standard RS-232 port
Power Supply	AC220V±10% 50/60Hz; 110V±10% 60Hz
Package Size(W*D*H)	540*475*375mm
Gross Weight	10kg

Auto Urine Analyzer UA-240

Testing Items:

Urobilinogen(UBG), Bilirubin(BIL), Ketone body(KET), Occult blood(BLD), Protein(PRO), Nitrite(NIT), Leukocyte(LEU), Glucose(GLU), Specific gravity(SG), Power of hydrogen(pH), Vitamin C(VC), Micro albumin(MAL), Creatinine(CRF), Calcium ion(CAL).

Features:

- ①. High-precision sampler.
- ②. Auto mixing before aspirating samples.
- ③. Particular IC card control system and system upgrade function.
- ④. Drum-type test strip storehouse, could accommodate 200 strips.
- ⑤. STAT: emergency insert dedicated location.



Parameters:

Model	UA-240
Assay Method	Albedometry
Test Speed	240 Tests/hour
Sample Rack	5 test tube racks(5*10 samples)
Sample Volume	Not lower than the marked scale line on the test tube rack
Sampling Volume	<1.0ml
Wavelength	525nm, 610nm, 660nm
Storage	20,000 results
Interface	RS-232
Language	English and Spanish. Other languages on request
Print	Built-in thermal printer
Working Environment	Temperature: 15~35°C; Humidity: ≤75%
Power Supply	AC220V±10%, 50/60Hz; 110V±10%, 60Hz
Fuse Specification	250V, 2A
Package Size(W*D*H)	765*555*995mm
Gross Weight	83kg

Urinary Sediment Analysis System US-120

Test items:

Erythrocytes, White blood cells, Pus cells, Squamous epithelial cells, Non-squamous epithelial cell, Clear cast, Unclassified cast, Crystal, Bacteria, Blood bacteria, Sperm, Mucus, etc.

Features:

- ①. Automatic focusing function, no need of focusing liquid.
- ②. Sample waiting area can accommodate 60 samples at a time.
- ③. Automatic orbital 10-tube sample racks continuous sampling.
- ④. Single needle, 4-channel sampling design, equivalent to 4 instruments in testing.
- ⑤. Use of planar flow technique, medical image information fusion technology and intelligence visual recognition technology.



Reagent Parameters:

Model	US-120
Test Speed	120 Tests/hour
Counting Cell	Four channels
Sample Volume	≥2.5 ml
Sampling Volume	0.5ml
Sensitivity	<10/μl
Repeatability(CV)	<10%
Pollution Rate	<0.05%
False Negative Rate	<3%
Recognition Rate	>95%
Data Storage	200,000 results
Language	English. Other languages on request
Printer	External printer
Working Environment	18~30°C
Power Supply	AC220V±10%, 50/60Hz; 110V±10%, 60Hz
Package Size(W*D*H)	1160*280*770mm
Gross Weight	100kg

Auto Electrolyte Analyzer BKE Series

Features:

- ①. Automatic electric potential tracking and correcting software.
- ②. Automatically detect and filter tiny bubbles.
- ③. Real-time diagnostic of system working status.
- ④. Waste liquid automatic detection and alarming.
- ⑤. Automatic calibration and two-point correction.
- ⑥. Wave theory flushing method and direct flushing pipe method.
- ⑦. High accurate and long life electrode and TCO₂ sensor.
- ⑧. Sleep mode to reduce reagent consumption.
- ⑨. Rapid test speed of 80 tests per hour.
- ⑩. Option: Sample tray.



Email: export@biobase.com

Website: www.biobase.cc / www.meihuatrade.com

Model	Measuring Range	Resolution	Measuring Precision
K ⁺	0.5~20.0mmol/L	0.01 mmol/L	≤1.0%
Na ⁺	15~200mmol/L	0.1 mmol/L	≤1.0%
Cl ⁻	15~200mmol/L	0.1 mmol/L	≤1.0%
Ca ²⁺	0.1~6.0mmol/L	0.01 mmol/L	≤1.0%
Li ⁺	0.1~5.0mmol/L	0.01 mmol/L	≤2.0%
pH	4~9pH	0.01 pH	≤0.5%
TCO ₂	2.0~70.0mmol/L	0.1 mmol/L	≤3.0%

Parameter:

Item	BKE Series	
Sample	Serum, plasma, whole blood, cerebrospinal fluid and dilute urine	
Measuring Speed	≤ 25s	
Analysis Method	Ion selective electrode (ISE)	
Sample Volume	60~300μl (3 parameters to 11 parameters)	
Sample Position	35 Positions (including 1 QC)	
Storage	Up to 10,000 test results	
Printer	Built-in thermal printer	
Interface	RS232 port	
Working Conditions	Power Supply	AC220V±10% 50/60Hz; 110V±10% 60Hz; 120W
	Temperature	5~40°C
	Relative Humidity	≤ 80 %
	Atmospheric Pressure	(86~106) kPa
Package Size (W*D*H)	490*390*700mm	
Gross Weight	27kg	

Email: export@biobase.com

Model	Test Items
BKE-A	K, Na, Cl
BKE-B	K, Na, Cl, TCO ₂ , AG
BKE-C	K, Na, Cl, iCa, nCa, TCa, pH
BKE-D	K, Na, Cl, iCa, nCa, TCa, pH, TCO ₂ , AG
BKE-F	K, Na, Cl, Li
BKE-H	K, Na, Cl, iCa, nCa, TCa, pH, Li
BKE-I	K, Na, Cl, iCa, nCa, TCa, pH, Li, TCO ₂ , AG
BKE-J	K, Na, Cl, Mg
BKE-K	K, Na, Cl, iCa, nCa, TCa, pH, Mg
BKE-L	K, Na, Cl, iCa, nCa, TCa, pH, Li, Mg, TCO ₂ , AG

Blood Gas & Electrolyte Analyzer

BGE800 Series

Features:

- ①. 10.4" TFT Touch Screen
- ②. Infrared human-dector
- ③. Auto QC Cartridge
- ④. Easy to use, fast data input
- ⑤. Cost-saving standby mode
- ⑥. Rich data management
- ⑦. Flexible and simple calibrants cartridge
- ⑧. Friendly operation interface



Models:

BGE-800A: pH(CH), pCO₂, pO₂, K, Na⁺, Cl⁻, Ca⁺⁺, Hct, B.P.

BGE-800B: pH, pCO₂, pO₂, Hct, B.P.

Measured Parameters:

Test Items	Measuring Range	Unit
pH(CH)	6.000~9.000	pH scale
pCO ₂	1.607~26.67	kpa
	8.0~200.0	mmHg
pO ₂	0~106.7	kpa
	0~800.0	mmHg
K	0.5~15.0	mmol/L
Na ⁺	20.0~200.0	mmol/L
Cl ⁻	20.0~200.0	mmol/L
Ca ⁺⁺	0.3~5.0	mmol/L
Hct	12.0~65.0	%
B.P.	500~800	
Glu	1.1~66.7	mmol/L
Lac	0.4~30.0	mmol/L

Derived(Calculated) Parameters	
pH(TC)	pH Temperature Corrected
pCO ₂ (TC)	pCO ₂ Temperature Corrected
pO ₂ (TC)	pCO ₂ Temperature Corrected
TCO ₂	Total Carbon Dioxide
HCO ₃	Actual Plasma Bicarbonate
BEb	Base Excess in Blood
BEecf	Base Excess Inextra Cellular Fluids
SBC	Standard Bicarbonate
sO ₂ %	Calculated Oxygen Saturation Percentage
Ca ⁺⁺ (7.4)	Ionized Calcium Normalized" to pH 7.4
TCa	Total Calcium Content
AG	Anion Gap
RI	Respiratory Index
AaDO ₂	Alveolar Artillery Oxygen Gradient
O ₂ SAT	Oxygen Saturation
tHb(c)	Hernoglobin (Calculated)

Model	BGE-800 Series
Sample	Whole blood, Serum, Plasma, Dialysate, CSF
Input Parameters	Patient Temperature, Hemoglobin, FiO ₂ , B.P.
Analysis Time	<90s
Sample Volume	95μl (whole blood), 35μl (capillary blood)
Calibration	Automatic, Programmable, One-point and Two-point
Data Storage	More than 10,000 results
Display	10.4" TFT touch screen
Battery	Lead acid battery, 2.3Ah
Printer	Built- in thermal printer, 70mm
Barcode Reader	Up to 14 kinds barcode type
Interface	Serial line RS-232
	TCP/IP interface
	USB port
Working Conditions	Integrated bar-code reader
	Power Supply: AC220V±10% 50/60Hz; 110V±10% 60Hz; 150W
	Temperature: 15~30°C
	Storage Environment: 5~45°C
Package Size (W*D*H)	800*680*640mm
Gross Weight	50kg
Reagent Package Size (W*D*H)	320*460*370mm
Reagent Gross Weight	7kg

Water Purifier (RO & DI water)

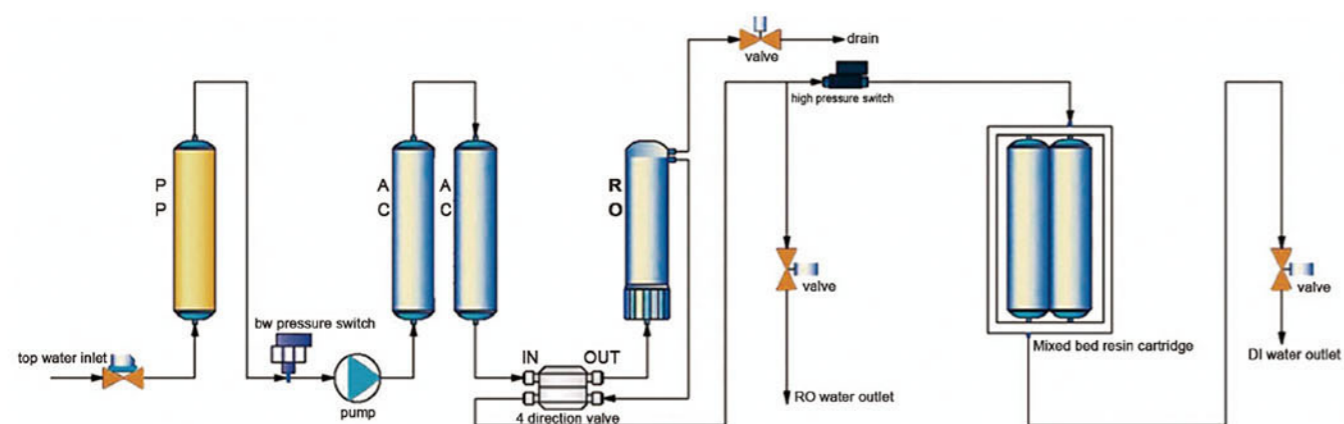


SCSJ-I-10L



SCSJ-II-30L

Purifying procedure:



PF: Pre-treatment Filter AC: Activated Carbon RO: Reverse Osmosis DI: Ion Exchange

Parameters:

Model	SCSJ-I-10L	SCSJ-II-30L	
Water Output Type	RO & DI water		
Water Output Speed	10L/H	30L/H	
Purifying Procedure	PF+AC+RO+DI		
Water Supply Requirement	Tap water: TDS<200ppm, 5~45°C, 1.0~3.5Kgf/cm2		
Pre-treatment	10"PP filter*1+10"Activated carbon *2		
RO Unit	100GPD RO membrane*1		
Subsequent Unit	Deion purification column*1		
Pure Water Quality	<ul style="list-style-type: none"> •Soluble organic matter: Rejection rate>99% (molecular weight>100) •Particle: Rejection rate>99% •Microbe: Rejection rate>99% •Salt rejection rate: >99% •TDS (total solids solubility): RO water: 5~10 ppm •Resistivity: 7.0~10.0 MΩ·cm •PM (particulate matter) (>0.22μm): <1/ml •Conductivity: 0.143~0.100 μs/cm •Microbe/Germ: <1 CFU/ml 		
	Water Quality Monitor	•TDS (Total Dissolved Solids) meter	
	Consumption	48W	200W
	Power Supply	AC220V±10%, 50/60Hz; 110V±10%, 60Hz	
	Standard Configuration	Main body (Include 1 set of cartridges)+TDS meter	
	External Size (W*D*H)	394*390*502mm	325*403*650mm
	Package Size (W*D*H)	531*551*621mm	391*471*1176mm & 700*300*250mm
Gross Weight	37.6kg	41kg	